

CEREC MC XL

Change the water:

Interval: When prompted by the system after 240min milling time

According to the directions in the operating instructions

DENTATEC:

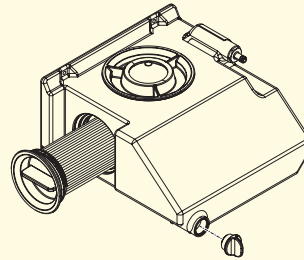
Default: 75ml

Plastic: 15ml

Empress CAD/e.max CAD: 100ml

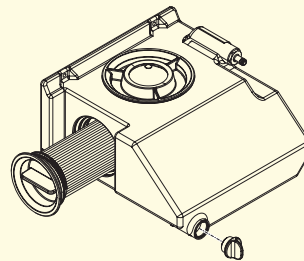
Clean the filter:

Interval: When changing the water and when the "Water pressure too low" message appears.



Change the filter:

Interval: Immediately if damaged; otherwise every 3 months.



Change milling instruments (burs):

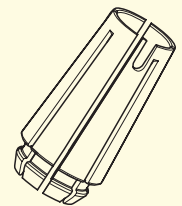
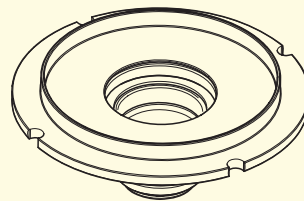
Interval: When prompted by the system; after 25 restorations at the latest

Machine care

Interval: Once a month

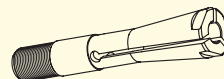
Clean the block chuck and block clamping nut:

Clean and **lubricate** the block chuck and block clamping nut according to the instructions of the cleaning set (REF 61 77 161).



Clean the chucks of the milling instruments:

Clean and **lubricate the threads** of the milling instrument chucks according to the instructions of the cleaning set (REF 61 77 161).



Check the water nozzles:

If the jets of water do not strike the milling instruments, carefully remove any foreign particles from the water nozzles with a probe.

inLab MC XL

Change the water:

Interval: When prompted by the system after 240 min milling time

According to the directions in the operating instructions

DENTATEC:

Default: 75ml

Plastic: 15ml

Empress CAD/e.max CAD: 100ml

Change milling instruments (burs):

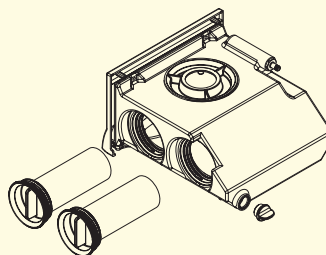
Interval: When prompted by the system; after 25 units at the latest

Machine care

Interval: Once a week or after every 4th water change

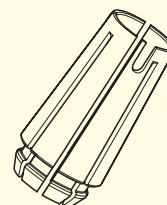
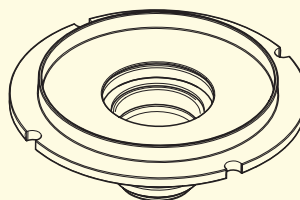
Change the filter:

According to the directions in the operating instructions



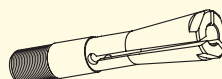
Clean the block chuck and block clamping nut:

Clean and **lubricate** the block chuck and block clamping nut according to the instructions of the cleaning set (REF 61 77 161).



Clean the chucks of the milling instruments:

Clean and **lubricate the threads** of the milling instrument chucks according to the instructions of the cleaning set (REF 61 77 161).



Check the water nozzles:

If the jets of water do not strike the milling instruments, carefully remove any foreign particles from the water nozzles with a probe.