



CAD/CAM

CEREC 3D Software IPS Empress CAD Multi Extension Pack

Installation:

The IPS Empress CAD Extension Pack can be installed only on software version \geq V2.8x.

Application:

After the above extension pack is installed, the following materials are additionally available for milling:

IVOCLAR VIVADENT IPS Empress CAD (size V5, V12, I8, I10, I12, C14)

IVOCLAR VIVADENT IPS Empress CAD Multi (size I12, C14, C14L)

You can select the three multicolored blocks of IPS Empress CAD Multi material from the list of polychromatic blocks in the milling preview in order to check the position of the restoration and change it with the position tool if necessary. Also refer to Chapter 6.1 ("Preview of milling simulation") in the Operator's Manual.

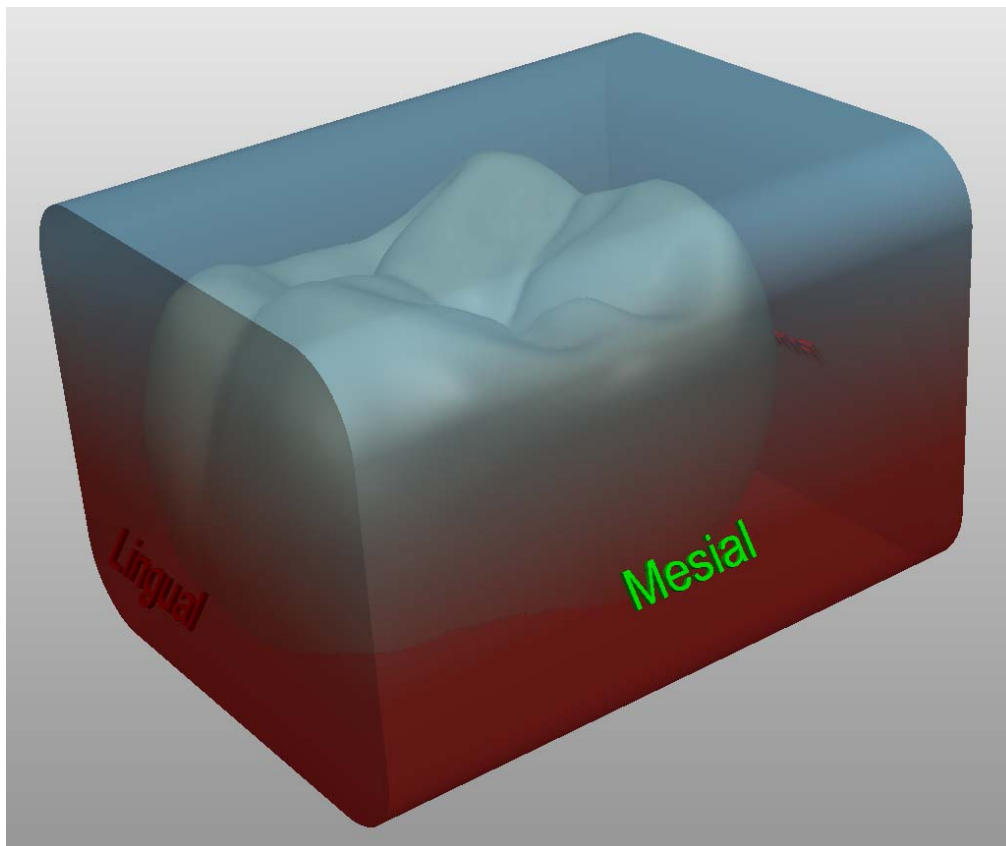


Fig. 1: Positioning the crown in IPS Empress CAD Multi



General installation instructions for CEREC service and extension packs

All you have to do to install the latest service and extension packs is visit the Sirona website on a PC with internet access. At our website you can download the required service and/or extension packs and burn them to a blank CD. Then you can insert this CD in your acquisition unit and execute the installation program.

Proceed as follows:

1. Insert a blank CD:

Insert a new blank CD in the CD writer. If a window with *Cancel* opens, close it.

2. Location of the latest service and extension packs:

Visit the Cerec download page on a PC with internet access:

Products > CAD/CAM systems > CEREC: for the dentist > Downloads

3. Download one or more service and/or extension packs

Click the desired service or extension pack with the left mouse button. Respond to the query "Would you like to save or execute this file?" by selecting *Save*. In the "Save as" dialog box, click *My Computer* on the left. Then double-click the CD drive and click the *Save* button.

Repeat these steps until all of the required service and/or extension packs have been saved.

4. Burning the CD

Start the Windows Explorer: Either press the Windows key and "e" simultaneously or click Start -> Programs -> Accessories -> Windows Explorer. Click "My Computer" with the left mouse button. Then right-click the CD drive and left-click "Write these files to CD". Click *Next* and wait until Windows has finished burning the CD.

Then you can remove the CD from the CD drive.

Note: This functionality is possible only under Windows XP. If you have installed any another operating system, please use your standard CD burning program.

5. Insert the CD in the acquisition unit:

Insert the CD in the CD drive of the acquisition unit (you first must open the front side of your acquisition unit to do this). If the Windows Explorer window does not automatically open, then open it manually (see Item 4). To open it manually, first click "My Computer", and then click the CD drive.

6. Install the service/extension pack

Double-click the relevant service/extension pack to start the corresponding installation procedure.

Note: There may be separate installation instructions. Please read these instructions before performing the installation.